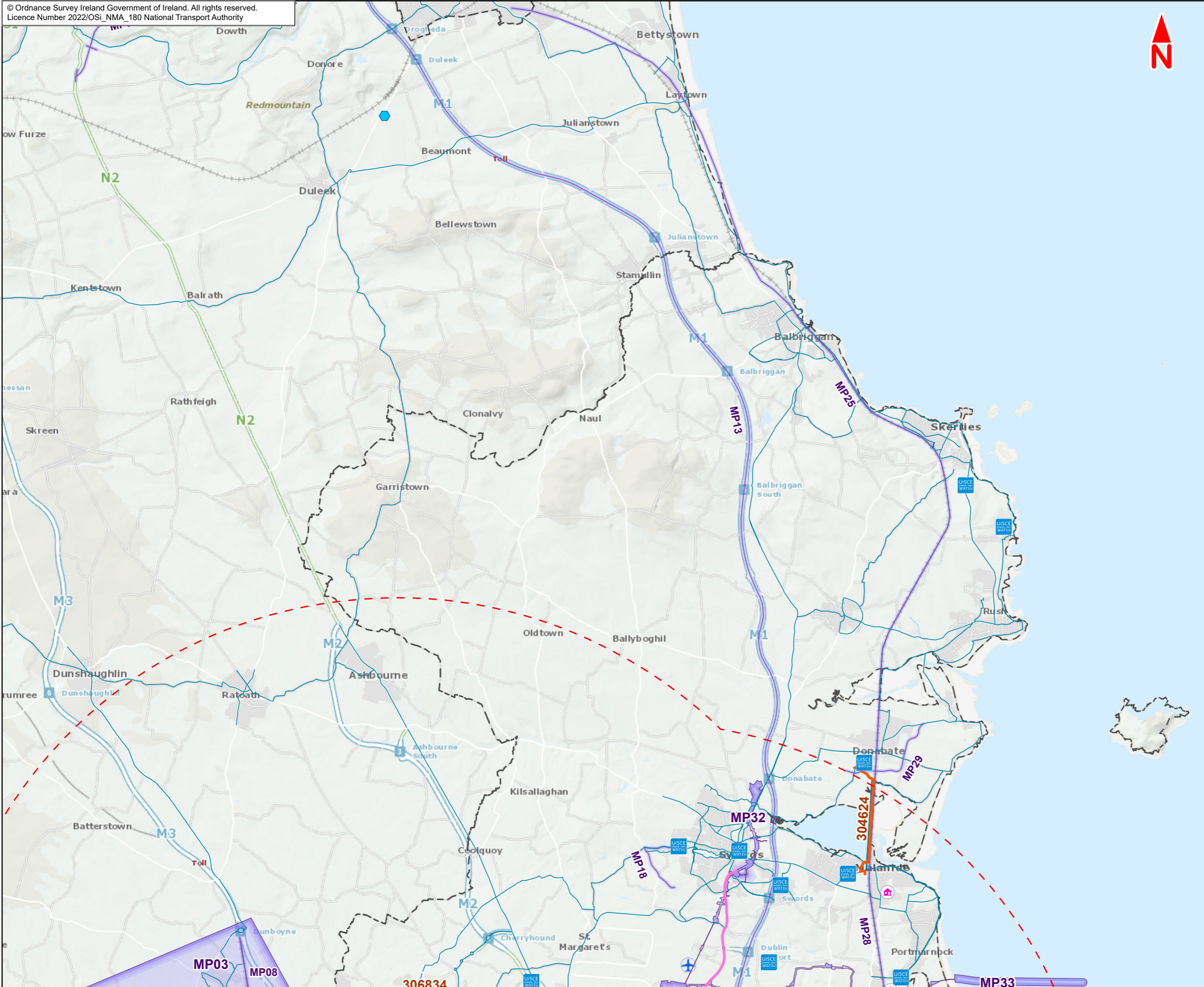


The background features a vibrant yellow field with abstract, overlapping shapes in dark blue, light blue, and teal. Several white circles of varying sizes are scattered throughout, some appearing as if they are part of the larger shapes or as standalone elements. The overall aesthetic is modern and geometric.

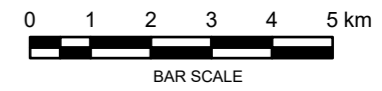
## 21.1

### Cumulative Effects: Shortlisted Strategic Development and Major Projects



- Legend :**
- 15km buffer
  - Strategic Housing Development (SHD)
  - River Poddle Flood Alleviation Scheme site (SID)
  - UISCE WATER Irish Water Project
  - Greater Dublin Area (GDA) Cycle Network Plan
  - Strategic Infrastructure Development (SID)
  - Strategic Infrastructure Development (SID)
  - Other major project (linear)
  - Other major project
  - Local authority boundary

This drawing is not to be used in whole or in part other than for the intended purpose and project as defined on this drawing. Contains Irish Public Sector Data licensed under a Creative Commons Attribution 4.0 International (CC BY 4.0) license.



**Disclaimer**  
a. © National Transport Authority (NTA) 2022. This drawing is confidential and the copyright in it is owned by NTA. This drawing must not be either loaned, copied or otherwise reproduced in whole or in part or used for any purpose without the prior permission of NTA.  
b. This drawing is to be used for the design element identified in the titleblock. Other information shown is to be considered indicative only. The drawing is to be read in conjunction with all other relevant design drawings.  
c. O.S. data used for plans are printed under © Ordnance Survey Ireland Government of Ireland. All rights reserved. Licence Number 2022/OSI\_NMA\_180 National Transport Authority. All elevations are in metres and relate to OSI Geoid Model (OSGM15) Mean Head. All Co-ordinates are in Irish

Transverse Mercator Grid (ITM) as defined by OSI active local GPS station.  
d. Information concerning the position of apparatus shown on this drawing is based on drawings supplied by the utility owners and/or the utility works contractor, whilst every care has been taken in the preparation of this drawing, positions should be taken as approximate and are intended for general guidance only and no representation is made by the NTA as to the accuracy, completeness, sufficiency or otherwise of this drawing and the position of the apparatus. The information contained herein does not purport to be comprehensive or final as the apparatus is subject to being altered and/or superseded. Recipients should not rely on this information. Any liabilities are hereby expressly disclaimed.

e. The information contained herein has been provided by the NTA but does not purport to be comprehensive or final. Recipients should not rely on the information. Neither the NTA nor any of its directors, officers, employees, agents, stakeholders or advisers make any representation or warranty as to, or accept any liability or responsibility in relation to, the adequacy, accuracy, reasonableness or completeness of the information provided as part of this document or any matter on which the information is based (including but not limited to loss or damage arising as a result of reliance by recipients on the information or any part of it. Any liabilities are hereby expressly disclaimed.



Rev	Date	Drn	Chk'd	App'd	Description
M01	Mar 2022	LF	PW	DK	ISSUE FOR PHASE 4 : PLANNING

Client  
**NTA**  
Udarás Náisiúnta Iompair  
National Transport Authority

Date: 09/03/2022  
Scale @ A3: 1:125,000

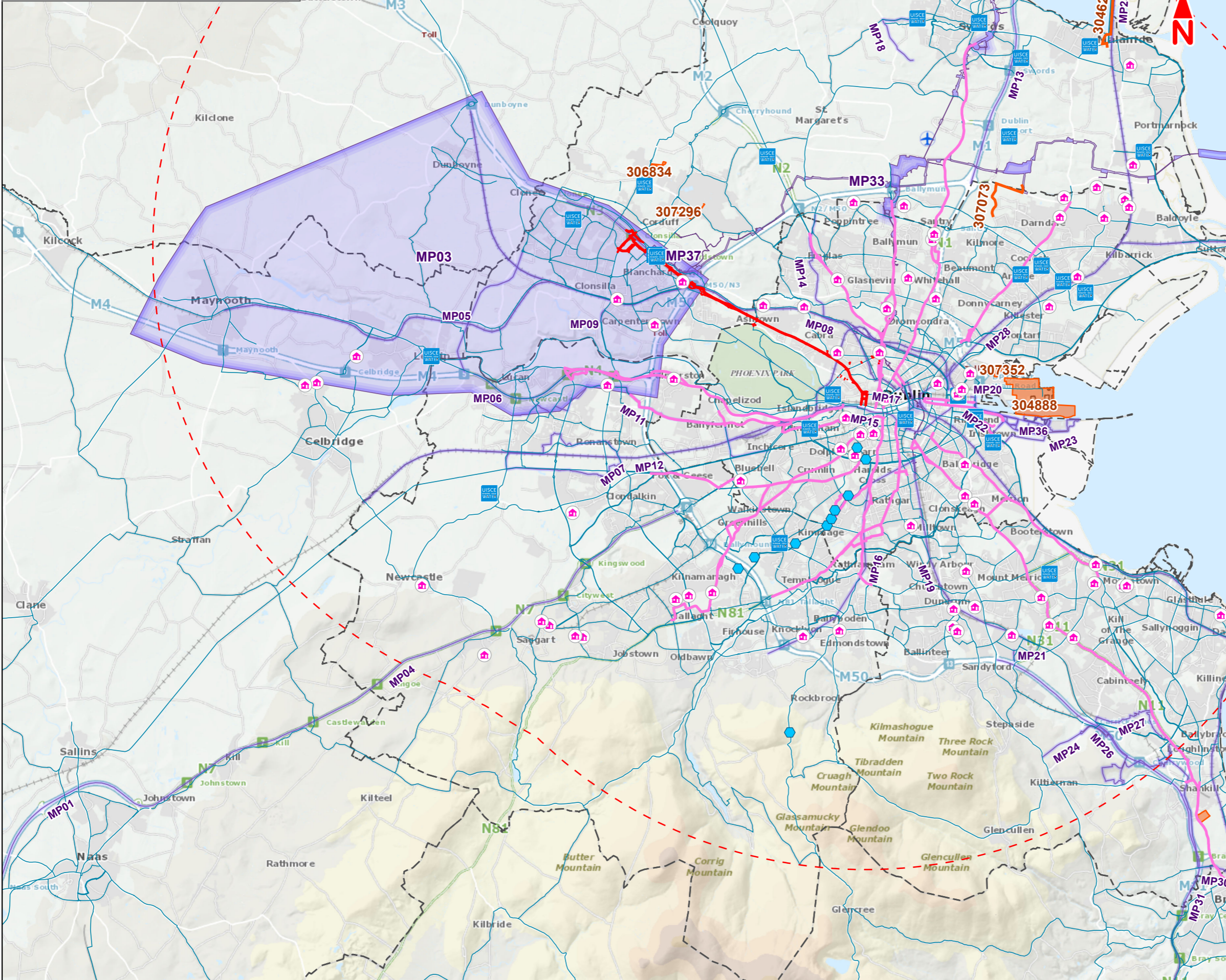
Project Code: BCIDE  
Originator Code: JAC

Consultant  
**JACOBS ARUP SYSTRA**

Drawn: LF  
Checked: PW  
Approved: DK

QMS Code

Programme Title <b>BUSCONNECTS DUBLIN CORE BUS CORRIDORS INFRASTRUCTURE WORKS</b>			
Drawing Title Blanchardstown to City Centre Core Bus Corridor Scheme Figure 21.1 Cumulative Effects: Shortlisted Strategic Development and Major Projects			
Drawing File Name BCIDE-JAC-ENV_BC-0005_XX_00-DR-GG-0101	Sheet Number 1 of 3	Status A	Rev M01



- Legend :**
- Blanchardstown to City Centre Core Bus Corridor Scheme
  - - - 15km buffer
  - Strategic Housing Development (SHD)
  - River Poddle Flood Alleviation Scheme site (SID)
  - Irish Water Project
  - Other Core Bus Corridor: indicative route
  - Greater Dublin Area (GDA) Cycle Network Plan
  - Strategic Infrastructure Development (SID)
  - Strategic Infrastructure Development (SID)
  - Other major project (linear)
  - Other major project
  - Local authority boundary

This drawing is not to be used in whole or in part other than for the intended purpose and project as defined on this drawing. Contains Irish Public Sector Data licensed under a Creative Commons Attribution 4.0 International (CC BY 4.0) license.



**Disclaimer**  
a. © National Transport Authority (NTA) 2022. This drawing is confidential and the copyright in it is owned by NTA. This drawing must not be either loaned, copied or otherwise reproduced in whole or in part or used for any purpose without the prior permission of NTA.  
b. This drawing is to be used for the design element identified in the titleblock. Other information shown is to be considered indicative only. The drawing is to be read in conjunction with all other relevant design drawings.  
c. O.S. data used for plans are printed under © Ordnance Survey Ireland Government of Ireland. All rights reserved. Licence Number 2022/OSI\_NMA\_180 National Transport Authority. All elevations are in metres and relate to OSI Geoid Model (OSGM15) Mean Head. All Co-ordinates are in Irish

Transverse Mercator Grid (ITM) as defined by OSI active local GPS station.  
d. Information concerning the position of apparatus shown on this drawing is based on drawings supplied by the utility owners and/or the utility works contractor, whilst every care has been taken in the preparation of this drawing, positions should be taken as approximate and are intended for general guidance only and no representation is made by the NTA as to the accuracy, completeness, sufficiency or otherwise of this drawing and the position of the apparatus. The information contained herein does not purport to be comprehensive or final as the apparatus is subject to being altered and/or superceded. Recipients should not rely on this information. Any liabilities are hereby expressly disclaimed.

e. The information contained herein has been provided by the NTA but does not purport to be comprehensive or final. Recipients should not rely on the information. Neither the NTA nor any of its directors, officers, employees, agents, stakeholders or advisers make any representation or warranty as to, or accept any liability or responsibility in relation to, the adequacy, accuracy, reasonableness or completeness of the information provided as part of this document or any matter on which the information is based (including but not limited to loss or damage arising as a result of reliance by recipients on the information or any part of it. Any liabilities are hereby expressly disclaimed.



Rev	Date	Drn	Chk'd	App'd	Description
M01	Mar 2022	LF	PW	DK	ISSUE FOR PHASE 4 : PLANNING

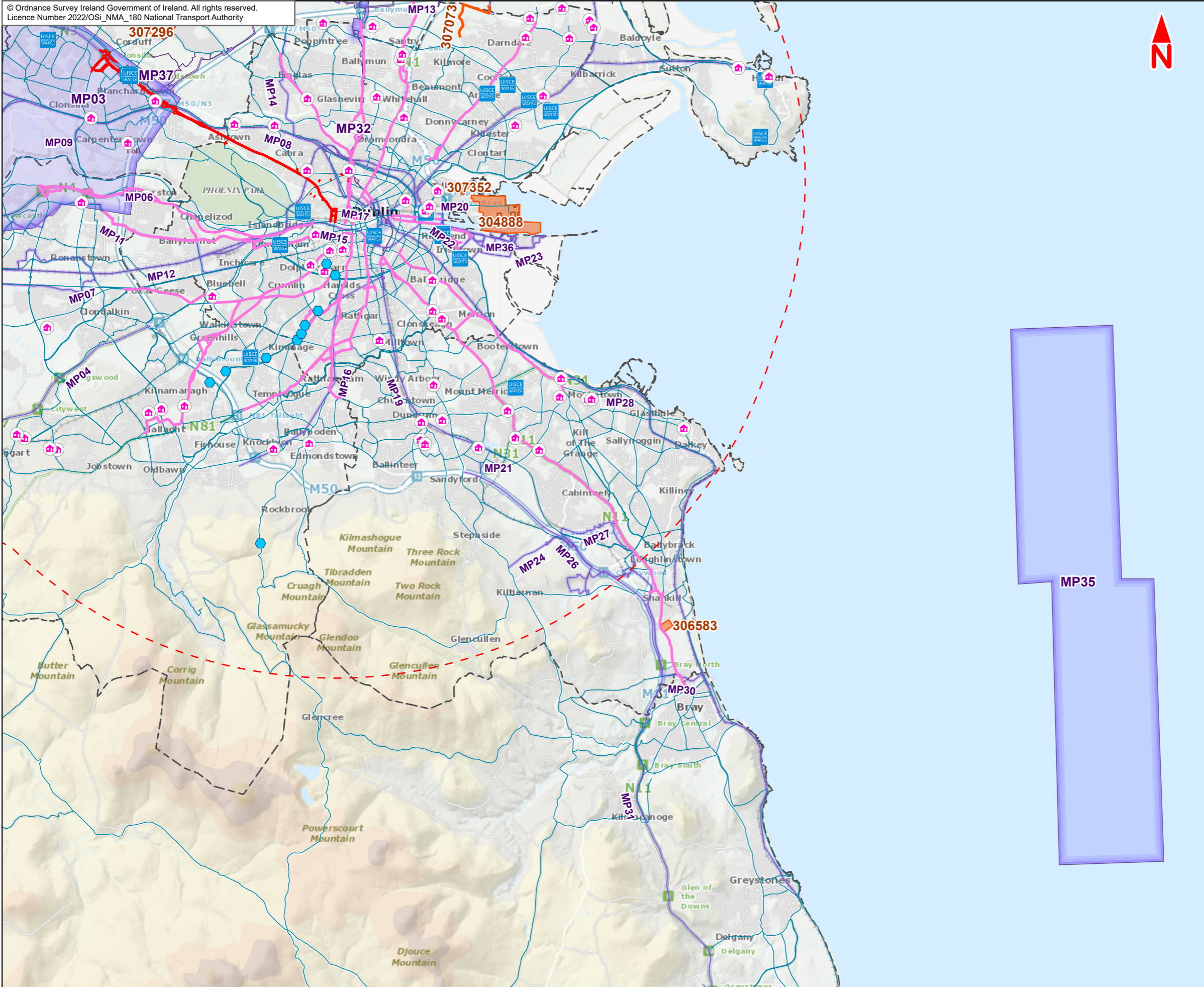
Client: **NTA**  
Udarás Náisiúnta Iompair  
National Transport Authority

Consultant: **JACOBS ARUP SYSTRA**

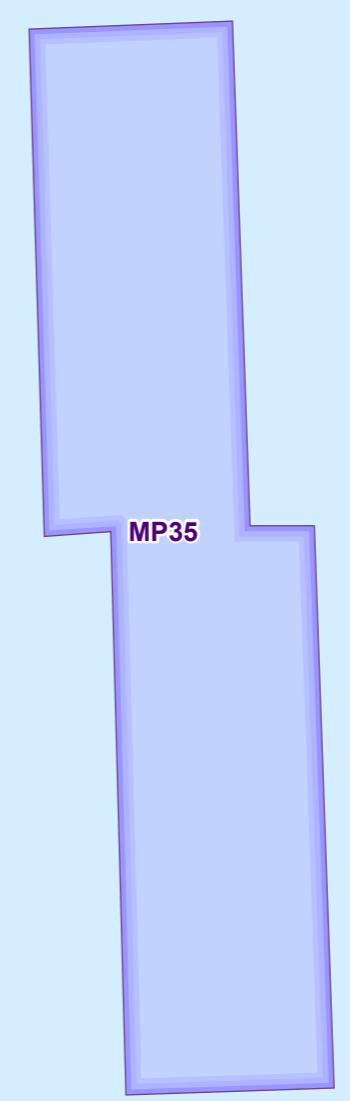
Date: 09/03/2022  
Scale @ A3: 1:125,000  
Project Code: BCIDE  
Originator Code: JAC

Drawn: LF  
Checked: PW  
Approved: DK

Programme Title: <b>BUSCONNECTS DUBLIN</b>			
Drawing Title: <b>CORE BUS CORRIDORS INFRASTRUCTURE WORKS</b>			
Drawing File Name: BCIDE-JAC-ENV_BC-0005_XX_00-DR-GG-0102			
Sheet Number: 2 of 3	Status: A	Rev: M01	



- Legend :**
- Blanchardstown to City Centre Core Bus Corridor Scheme
  - 15km buffer
  - 🏠 Strategic Housing Development (SHD)
  - River Poddle Flood Alleviation Scheme site (SID)
  - 🏠 Irish Water Project
  - Other Core Bus Corridor: indicative route
  - Greater Dublin Area (GDA) Cycle Network Plan
  - Strategic Infrastructure Development (SID)
  - ▭ Strategic Infrastructure Development (SID)
  - Other major project (linear)
  - ▭ Other major project
  - Local authority boundary



This drawing is not to be used in whole or in part other than for the intended purpose and project as defined on this drawing. Contains Irish Public Sector Data licensed under a Creative Commons Attribution 4.0 International (CC BY 4.0) license.



**Disclaimer**  
a. © National Transport Authority (NTA) 2022. This drawing is confidential and the copyright in it is owned by NTA. This drawing may not be reproduced, copied or otherwise used for any purpose without the prior permission of NTA.  
b. This drawing is to be used for the design element identified in the title block. Other information shown is to be considered indicative only. The drawing is to be read in conjunction with all other relevant design drawings.  
c. O.S. data used for plans are printed under © Ordnance Survey Ireland Government of Ireland. All rights reserved. Licence Number 2022/OSI\_NMA\_180 National Transport Authority. All elevations are in metres and relate to OSI Geoid Model (OSGM15) Mean Head. All Co-ordinates are in Irish Transverse Mercator Grid (ITM) as defined by OSI active local GPS station.

d. Information concerning the position of apparatus shown on this drawing is based on drawings supplied by the utility owners and/or the utility works contractor, whilst every care has been taken in the preparation of this drawing, positions should be taken as approximate and are intended for general guidance only and no representation is made by the NTA as to the accuracy, completeness, sufficiency or otherwise of this drawing and the position of the apparatus. The information contained herein does not purport to be comprehensive or final as the apparatus is subject to being altered and/or superseded. Recipients should not rely on this information. Any liabilities are hereby expressly disclaimed.

e. The information contained herein has been provided by the NTA but does not purport to be comprehensive or final. Recipients should not rely on the information. Neither the NTA nor any of its directors, officers, employees, agents, stakeholders or advisers make any representation or warranty as to, or accept any liability or responsibility in relation to, the adequacy, accuracy, reasonableness or completeness of the information provided as part of this document or any matter on which the information is based (including but not limited to loss or damage arising as a result of reliance by recipients on the information or any part of it. Any liabilities are hereby expressly disclaimed.



Rev	Date	Drn	Chk'd	App'd	Description
M01	Mar 2022	LF	PW	DK	ISSUE FOR PHASE 4 : PLANNING

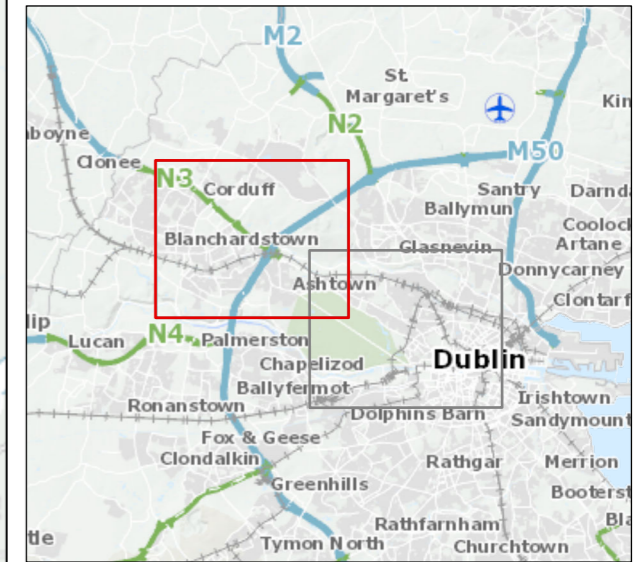
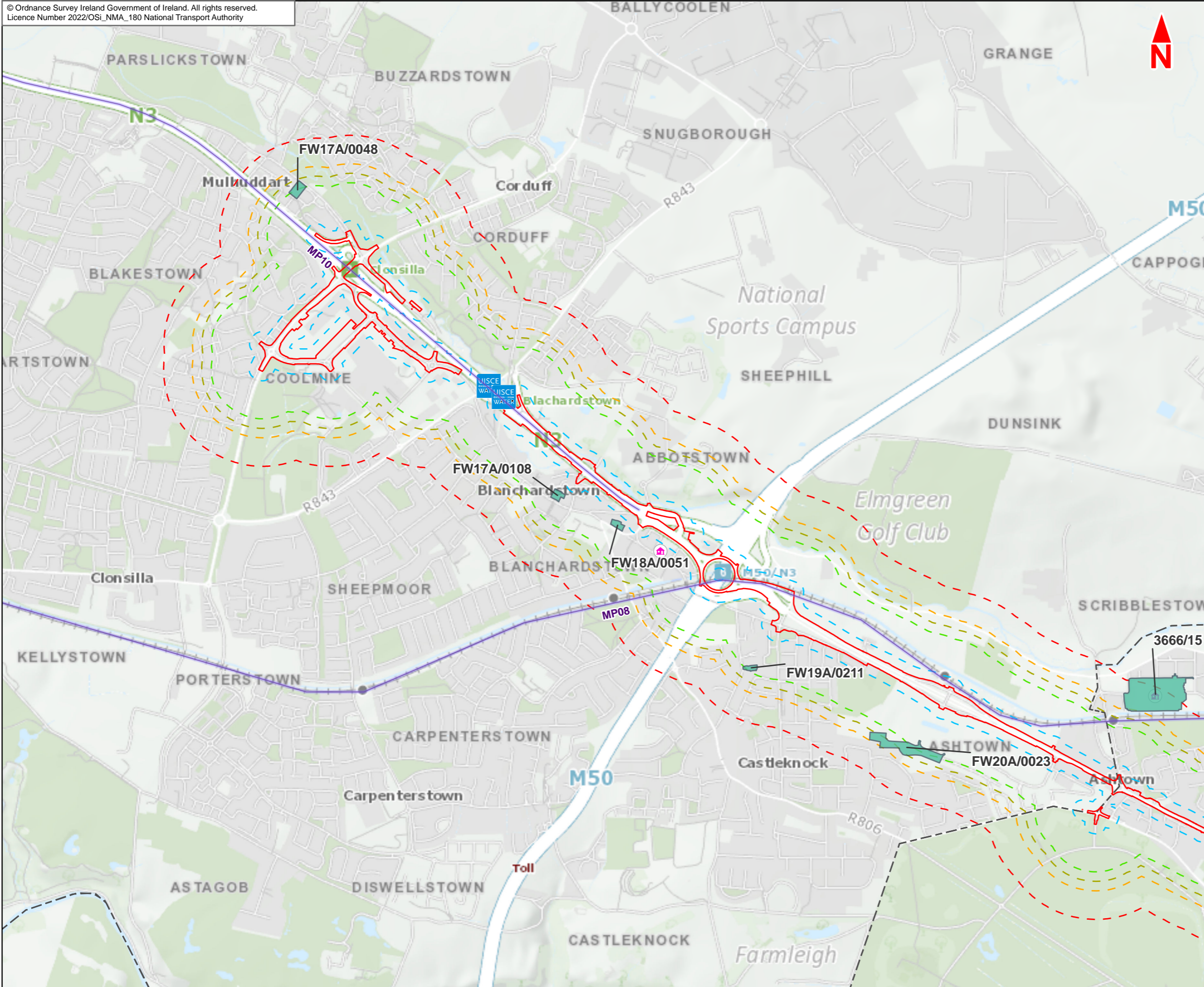
Client <b>NTA</b> Udarás Náisiúnta Iompair National Transport Authority		Consultant <b>JACOBS</b> <b>ARUP SYSTRA</b>		
Date 09/03/2022	Scale @ A3 1:125,000	Drawn LF	Checked PW	Approved DK
Project Code BCIDE	Originator Code JAC	QMS Code		

Programme Title <b>BUSCONNECTS DUBLIN</b> <b>CORE BUS CORRIDORS INFRASTRUCTURE WORKS</b>				
Drawing Title Blanchardstown to City Centre Core Bus Corridor Scheme Figure 21.1 Cumulative Effects: Shortlisted Strategic Development and Major Projects				
Drawing File Name BCIDE-JAC-ENV_BC-0005_XX_00-DR-GG-0103	Sheet Number 3 of 3	Status A	Rev M01	

## 21.2

Cumulative Effects:  
Shortlisted Planning  
Applications and other  
Projects within 500m





- Legend :**
- Blanchardstown to City Centre Core Bus Corridor Scheme
  - 500m buffer
  - 350m buffer
  - 300m buffer
  - 250m buffer
  - 50m buffer
  - Irish Water Project
  - Strategic Housing Development (SHD)
  - Other major project (linear)
  - Scheme C1 Screened Application
  - Local authority boundary

This drawing is not to be used in whole or in part other than for the intended purpose and project as defined on this drawing. Contains Irish Public Sector Data licensed under a Creative Commons Attribution 4.0 International (CC BY 4.0) license.



**Disclaimer**

a. © National Transport Authority (NTA) 2022. This drawing is confidential and the copyright in it is owned by NTA. This drawing must not be either loaned, copied or otherwise reproduced in whole or in part or used for any purpose without the prior permission of NTA.

b. This drawing is to be used for the design element identified in the titleblock. Other information shown is to be considered indicative only. The drawing is to be read in conjunction with all other relevant design drawings.

c. O.S. data used for plans are printed under © Ordnance Survey Ireland Government of Ireland. All rights reserved. Licence Number 2022/OSI\_NMA\_180 National Transport Authority. All elevations are in metres and relate to OSi Geoid Model (OSGM15) Mean Head. All Co-ordinates are in Irish Transverse Mercator Grid (ITM) as defined by OSi active local GPS station.

d. Information concerning the position of apparatus shown on this drawing is based on drawings supplied by the utility owners and/or the utility works contractor, whilst every care has been taken in the preparation of this drawing, positions should be taken as approximate and are intended for general guidance only and no representation is made by the NTA as to the accuracy, completeness, sufficiency or otherwise of this drawing and the position of the apparatus. The information contained herein does not purport to be comprehensive or final as the apparatus is subject to being altered and/or superseded. Recipients should not rely on this information. Any liabilities are hereby expressly disclaimed.

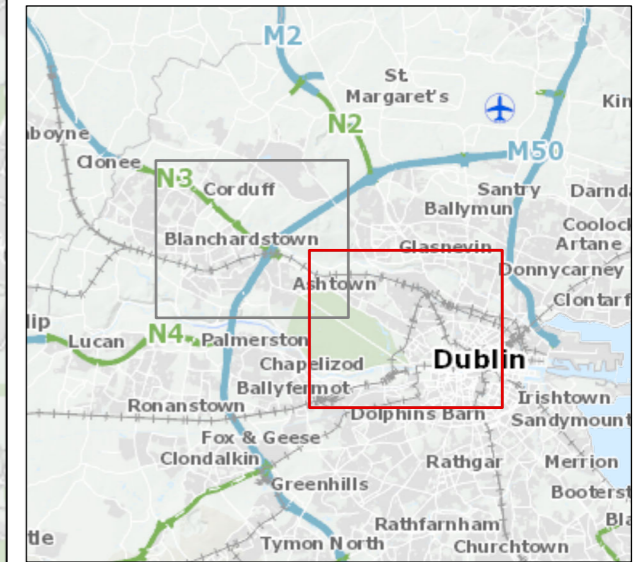
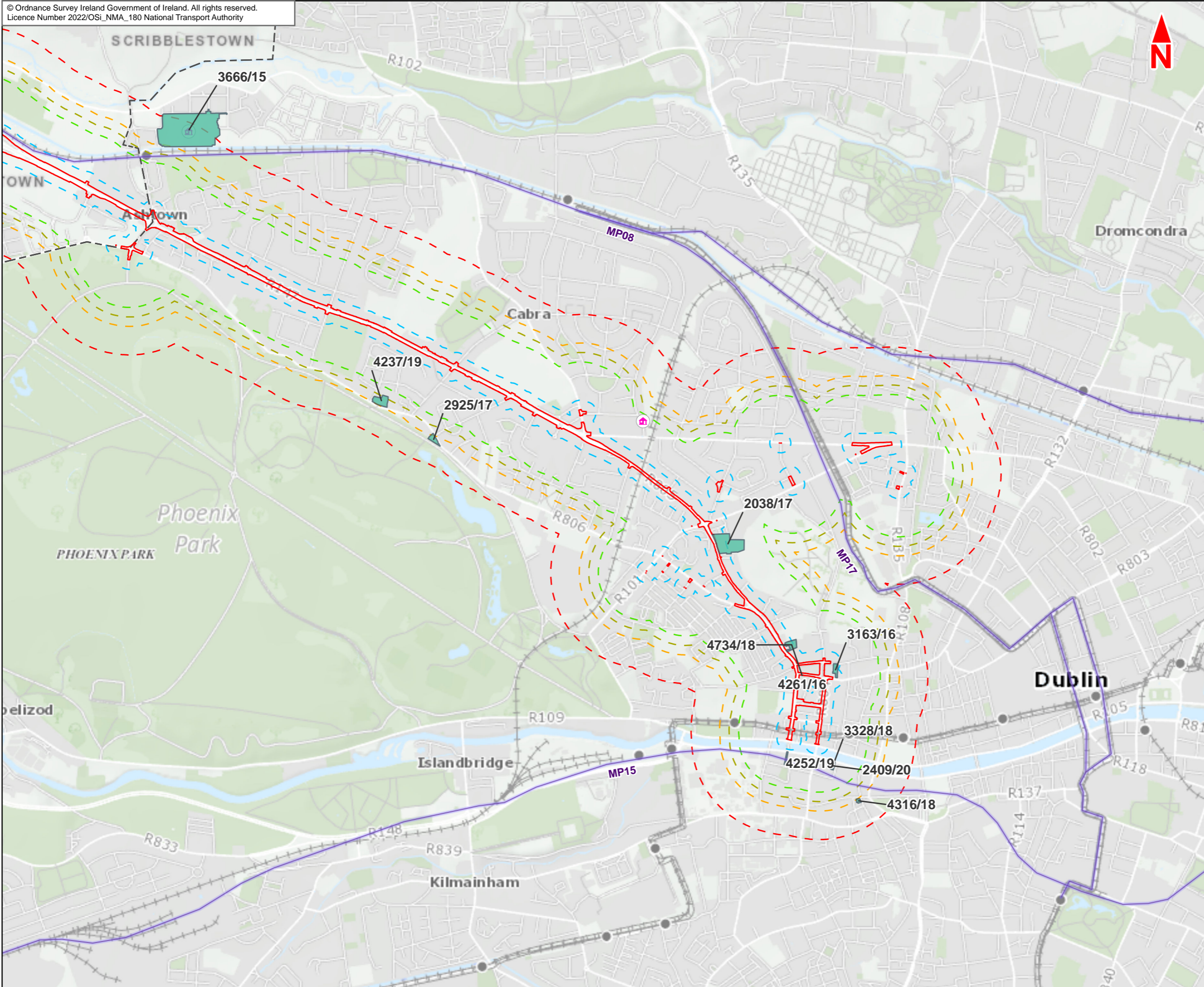
e. The information contained herein has been provided by the NTA but does not purport to be comprehensive or final. Recipients should not rely on the information. Neither the NTA nor any of its directors, officers, employees, agents, stakeholders or advisers make any representation or warranty as to, or accept any liability or responsibility in relation to, the adequacy, accuracy, reasonableness or completeness of the information provided as part of this document or any matter on which the information is based (including but not limited to loss or damage arising as a result of reliance by recipients on the information or any part of it. Any liabilities are hereby expressly disclaimed.



Rev	Date	Drn	Chk'd	App'd	Description
M01	Mar 2022	LF	PW	DK	ISSUE FOR PHASE 4: PLANNING

Client <b>NTA</b> Udarás Náisiúnta Iompair National Transport Authority		Consultant <b>JACOBS</b> <b>ARUP SYSTRA</b>		
Date 10/03/2022	Scale @ A3 1:20,000	Drawn LF	Checked PW	Approved DK
Project Code BCIDE	Originator Code JAC	QMS Code		

Programme Title <b>BUSCONNECTS DUBLIN</b> <b>CORE BUS CORRIDORS INFRASTRUCTURE WORKS</b>				
Drawing Title Blanchardstown to City Centre Core Bus Corridor Scheme Figure 21.2 Cumulative Effects: Shortlisted Planning Applications and other Projects within 500m				
Drawing File Name BCIDE-JAC-ENV_BC-0005_XX_00-DR-GG-0201	Sheet Number 1 of 2	Status A	Rev M01	



- Legend :**
- Blanchardstown to City Centre Core Bus Corridor Scheme
  - 500m buffer
  - 350m buffer
  - 300m buffer
  - 250m buffer
  - 50m buffer
  - Irish Water Project
  - Strategic Housing Development (SHD)
  - Other major project (linear)
  - Scheme C1 Screened Application
  - Local authority boundary

This drawing is not to be used in whole or in part other than for the intended purpose and project as defined on this drawing. Contains Irish Public Sector Data licensed under a Creative Commons Attribution 4.0 International (CC BY 4.0) license.



**Disclaimer**  
a. © National Transport Authority (NTA) 2022. This drawing is confidential and the copyright in it is owned by NTA. This drawing must not be either loaned, copied or otherwise reproduced in whole or in part or used for any purpose without the prior permission of NTA.  
b. This drawing is to be used for the design element identified in the title block. Other information shown is to be considered indicative only. The drawing is to be read in conjunction with all other relevant design drawings.  
c. O.S. data used for plans are printed under © Ordnance Survey Ireland Government of Ireland. All rights reserved. Licence Number 2022/OSI\_NMA\_180 National Transport Authority. All elevations are in metres and relate to OSi Geoid Model (OSGM15) Mean Head. All Co-ordinates are in Irish Transverse Mercator Grid (ITM) as defined by OSi active local GPS station.

d. Information concerning the position of apparatus shown on this drawing is based on drawings supplied by the utility owners and/or the utility works contractor, whilst every care has been taken in the preparation of this drawing, positions should be taken as approximate and are intended for general guidance only and no representation is made by the NTA as to the accuracy, completeness, sufficiency or otherwise of this drawing and the position of the apparatus. The information contained herein does not purport to be comprehensive or final as the apparatus is subject to being altered and/or superseded. Recipients should not rely on this information. Any liabilities are hereby expressly disclaimed.

e. The information contained herein has been provided by the NTA but does not purport to be comprehensive or final. Recipients should not rely on the information. Neither the NTA nor any of its directors, officers, employees, agents, stakeholders or advisers make any representation or warranty as to, or accept any liability or responsibility in relation to, the adequacy, accuracy, reasonableness or completeness of the information provided as part of this document or any matter on which the information is based (including but not limited to loss or damage arising as a result of reliance by recipients on the information or any part of it. Any liabilities are hereby expressly disclaimed.



Rev	Date	Drn	Chk'd	App'd	Description
M01	Mar 2022	LF	PW	DK	ISSUE FOR PHASE 4: PLANNING

Client  
**NTA**  
Udarás Náisiúnta Iompair  
National Transport Authority

Consultant  
**JACOBS ARUP SYSTRA**

Programme Title <b>BUSCONNECTS DUBLIN CORE BUS CORRIDORS INFRASTRUCTURE WORKS</b>				
Drawing Title Blanchardstown to City Centre Core Bus Corridor Scheme Figure 21.2 Cumulative Effects: Shortlisted Planning Applications and other Projects within 500m				
Drawing File Name BCIDE-JAC-ENV_BC-0005_XX_00-DR-GG-0202	Sheet Number 2 of 2	Status A	Rev M01	

Date 10/03/2022	Scale @ A3 1:20,000	Drawn LF	Checked PW	Approved DK
Project Code BCIDE	Originator Code JAC	QMS Code		



Údarás Náisiúnta Iompair  
National Transport Authority

National Transport Authority  
Dún Scéine  
Harcourt Lane  
Dublin 2  
D02 WT20



Project Ireland 2040  
Building Ireland's Future